



# Our Masterpieces

 Catalogue 2022 | EN

The expert for  
professional  
hair clippers

  
MADE IN  
GERMANY  
since 1946



## More than 75 years of MOSER history

Founded by KUNO MOSER in 1946 in the Black Forest, Germany, MOSER has since developed into one of the most internationally successful brands within the hairdressing industry, inspiring professional hairdressers all over the world. First-class products Made in Germany & innovative strength in hair clipper & blade technology – that is what MOSER stands for.

Over 75 years, MOSER has been striving for continuous improvement, highest quality & sustainability to provide every hairdresser a masterpiece for highest precision & unlimited creative work. 2021 celebrates 75 years of tradition & innovation with the launch of our latest masterpiece: KUNO, an homage to our founder, is our most powerful, compact & durable clipper.

75 years on from the foundation of our company, we remain true to our original goal: supporting you with the best tools for the best haircuts!

We wish you much pleasure in exploring the world of MOSER.

Sincerely, Your MOSER team

## Content

### Hair clippers

Professional tools for perfect hair cuts .....	page 4 – 19
Accessories & blade sets .....	page 20 – 23

### Hair trimmers

Most delicate contours & precise edges .....	page 26 – 31
Accessories & blade sets .....	page 32 – 33

### Finishing & styling

Hair dryers, styling & finishing tools .....	page 34 – 39
----------------------------------------------	--------------

### Professional accessories

Brushes, spray bottles, combs & more .....	page 40 – 41
--------------------------------------------	--------------

### Good to know

All about maintenance, service & education .....	page 42 – 43
--------------------------------------------------	--------------



# KUNO

**Professional superior clipper – our most powerful, most durable & most compact MASTERPIECE**

When the best isn't good enough! A true flyweight power pack – for real professional performance! The ideal combination of compactness & performance.

2 blades included

Lightweight & powerful

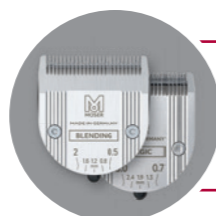
5 years warranty on long-life brushless motor

Non-slip grip element for perfect control

Cord / cordless (two way)



KUNO	
Article no.	1887-0050
EAN	Single: 4015110016663 Carton: 4015110031543   6 pcs.
Accessories	6 magnetic premium attachment combs 1.5, 3, 4.5, 6, 9, 12 mm, charging stand, plug-in transformer, cleaning brush, oil
Special warranty	2 years on battery   5 years on motor
Drive	Brushless DC-Motor, ~ 7.200 rpm
Run time   charge time	Up to 2h   ~ 1h10 quick charge
Operating voltage	100-240 V   50/60 Hz (plug-in-transformer)
Dimensions L/W/D   Weight	159 x 47 x 48 mm   210 g



**BLENDING BLADE – ideal for blending**  
0.5–2 mm | 1887-7050

**MAGIC BLADE II – standard blade set**  
0.7–3 mm | 1884-7041



## Power in my hands!

"KUNO is in a league of its own. Its precision & performance are just great. This machine is an irreplaceable one power pack, lies perfectly in hand & is brilliant at its handling!"

*Chris Mattick*

Lead Educator MOSER Artistic Team

## 2 top blade sets included

### BLENDING BLADE – ideal for blending

0.5–2 mm | 1887-7050



Extra flat angle for cuts close to the skin

Effortlessly create natural transitions thanks to the new offset cutting teeth geometry – faster than when using scissors or standard blade sets, ideal for blending

Short cutting length & delicate gradation: from 0.5 to 2 mm in 5 steps to the perfect result

### MAGIC BLADE II – standard blade set

0.7–3 mm | 1884-7041



Easy to clean, quick to replace

Ideal for taking out mass, clipper-over-comb technique, working with wet or dry hair

5-stage cutting length adjustment from 0.7 to 3 mm





# CHROM2STYLE BLENDING EDITION



## Professional clipper for smooth blending

The perfect tool for faster & easier natural transitions!  
Realizes smooth natural transitions extremely close to the skin with outstanding ergonomics.



Chip-controlled motor for constant cutting-power

More speed for fast & precise results

Innovative handle edge – more comfort & easy on the joints

Slim, ergonomic shape

Battery charge indicator via LED

Cord / cordless (two way)



CHROM2STYLE BLENDING EDITION	
Article no.	1877-0052
EAN	Single: 4015110023463 Carton: 4015110031451   6 pcs.
Accessories	4 magnetic premium attachment combs 1.5, 3, 4.5, 6 mm, charging stand, plug-in transformer, cleaning brush, oil
Special warranty	2 years on battery
Drive	DC motor with sound proofing, ~ 5.750 rpm
Run time   charge time	Up to 1h45   ~ 1h20 quick charge
Operating voltage	100–240 V   50/60 Hz (plug-in-transformer)
Dimensions L/W/D   Weight	178 x 48 x 52 mm   ~ 270 g



**BLENDING BLADE – ideal for blending**  
0.5–2 mm | 1887-7050



## I believe this is the perfect solution for transitions.

"Men's hair cuts require top precision. To meet my standard for a perfect cut, however, it takes hair clippers that perfectly blend transitions & are so agile & precise that they can turn my vision into reality. That's really easy to do with the CHROM2STYLE & the BLENDING BLADE. It is a true masterpiece for my masterpieces!"

*Marina Ulrich*

Best German & International Female Barber 2017

## Upgrade to business class with Marina!

Step-by-step toward a trendy men's haircut: Marina demonstrates how a "business cut" is perfectly executed using a CHROM2STYLE BLENDING EDITION & a T-CUT:



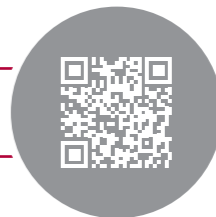
**Step 1:** Part a guiding line in a U-shape at the top of the head. **Step 2:** Evenly cut along the guiding line of the hair using the over-comb technique & the CHROM2STYLE BLENDING EDITION. **Step 3a/b:** Using the magnetic premium attachment comb (size 4.5 mm), cut the hair around the neck area towards the back of the head. (Step 4–9\*)

## Precision included: magnetic premium attachment combs from 1.5 mm to 6 mm



Optionally available for longer cuts:  
9 & 12 mm magnetic premium attachment combs

\*You can find the complete step-by-step guide for the "business cut" & much more that will inspire you on our website.





# GENIO PRO FADING EDITION



## Professional fading clipper

Never stop fading! Extra high speed for fast & precise cutting.  
Constant speed also for difficult hair & unlimited performance with 2 standard battery packs.



Chip-controlled motor for constant cutting-power

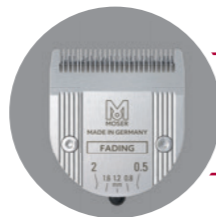
Ergonomic – for fatigue-free working

2 battery packs for non-stop power

Battery charge indicator via LED



GENIO PRO FADING EDITION	
Article no.	1874-0053
EAN	Single: 4015110023128 Carton: 4015110031406   6 pcs.
Accessories	2 standard battery packs, 4 magnetic premium attachment combs 1.5, 3, 4.5, 6 mm, charging stand, plug-in transformer, cleaning brush, oil
Drive	DC-Motor. ~ 5.750 rpm
Run time   charge time	Up to 1h45   ~ 1h20 quick charge
Operating voltage	100–240 V   50/60 Hz (plug-in-transformer)
Dimensions L/W/D   Weight	180 x 47 x 42 mm   ~ 280 g



**FADING BLADE** – ideal for precise on scalp fades  
0.5–2 mm | 1887-7020



## Extremely short, extremely simple to use!

"I love the battery technology, which means I can always work wirelessly. I like that flexibility. Thanks to the special FADING BLADE, I can blend transitions in no time. This clipper is the perfect tool to quickly & easily create short & precise fades."

*Enes Dogan*

Educator MOSER Artistic Team



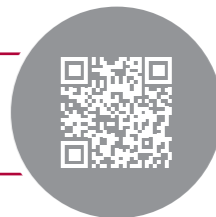
## "Short modern crop" by MOSER

This striking style features extremely faded sides and neck, which contrast with the softly textured top hair.



**Step 1:** Horseshoe-shaped section at the top of the head. **Step 2:** Trim the neck and side area with the MOSER GENIO PRO FADING EDITION with closed blade set. (Step 3\*) **Step 4:** Finish the contours with the MOSER T-CUT. **Step 5:** Fade the sides and neck with the attachment combs 3 and 1.5 mm towards 0. (Step 6–7\*)

\*You can find the complete step-by-step guide for the "short modern crop" & much more that will inspire you on our website.





# CHROM2STYLE

WEITERE INFOS



## Professional ergonomic clipper

Stay in balance!  
Revolutionary ergonomics will make work more enjoyable.



Easy-Grip switch for intuitive operability

Chip-controlled motor for constant cutting-power

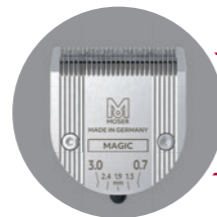
Slim, ergonomic shape

Battery charge indicator via LED

Cord / cordless (two way)



CHROM2STYLE	
Article no.	1877-0050
EAN	Single: 4015110017929 Carton: 4015110031444   6 pcs.
Accessories	4 slide-on attachment combs 3, 6, 9, 12 mm, charging stand, plug-in transformer, cleaning brush, oil
Special warranty	2 years on battery
Drive	DC motor with sound proofing, ~ 5.300 rpm
Run time   charge time	Up to 2h   ~ 1h20 quick charge
Operating voltage	100-240 V   50/60 Hz (plug-in-transformer)
Dimensions L/W/D   Weight	178 x 48 x 52 mm   ~ 270 g



**MAGIC BLADE II – standard blade set**  
0.7-3 mm | 1884-7041



## Ergonomic & well balanced.

The successor of the best-selling cordless hair clipper from MOSER the CHROMSTYLE PRO. More power and battery runtime for more comfortable working through due to improved ergonomics.



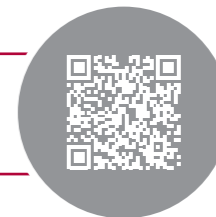
## Classic Gentleman by MOSER

The Classic Gentleman Look is still one of the most popular hairstyles for men. Especially because of its styling and its versatility - men love to wear it. The MOSER CHROM2STYLE is perfect for the basic haircut and for the blended transition areas. It is suitable both for shortening and for working out precise skin-to-hair transitions.



(Step 1\*) **Step 2:** Cut the sides in sections running diagonally backwards from front to back to the middle of the back of the head in order to create a layering effect. **Step 3:** Using the CHROM2STYLE and 9 mm attachment comb, work a transition into the neck area. **Step 4:** Using the appliance-over-comb technique, work a soft transition into the neck and side areas. (Step 5\*) **Step 6:** Blow-dry the hair. Pull up the top hair at a 90-degree angle and cut a dynamic guiding line using the over-comb technique. Slightly pull the fringe above the last guiding line. (Step 7-8\*)

\*You can find the complete step-by-step guide for the Classic Gentleman & much more that will inspire you on our website.





## GENIO PRO

**Professional universal clipper with 2 battery packs**

WEITERE INFOS



Always ready to perform!

Manages difficult hair with a constant speed level & unlimited performance.



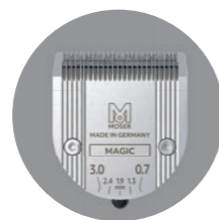
Chip-controlled motor for constant cutting-power

Ergonomic – for fatigue-free working

Battery charge indicator via LED



GENIO PRO	
Article no.	1874-0056
EAN	Single: 4015110028284 Carton: 4015110028291   6 pcs.
Accessories	2 standard battery packs, 4 slide-on attachment combs 3, 6, 9, 12 mm, charging stand, plug-in transformer, cleaning brush, oil
Drive	DC motor, ~ 5.300 rpm
Run time   charge time	Up to 2h   ~ 1h20 quick charge
Operating voltage	100–240 V   50/60 Hz (plug-in-transformer)
Dimensions L/W/D   Weight	180 × 47 × 42 mm   ~ 280 g



**MAGIC BLADE – standard blade set**  
0.7–3 mm | 1854-7506

## CHROMSTYLE PRO

**Professional universal clipper**

WEITERE INFOS

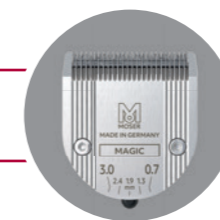


The classic!

MOSER`s best selling cordless clipper with constant speed for all kind of hair.



CHROMSTYLE PRO	
Article no.	1871-0081
EAN	Single: 4015110019497 Carton: 4015110031307   6 pcs.
Accessories	4 slide-on attachment combs 3, 6, 9, 12 mm, charging stand, plug-in transformer, cleaning brush, oil
Information system	Optical: via LED   acoustic: via signal-tones
Drive	DC motor with sound proofing, ~ 5.000 rpm
Run time   charge time	Up to 1h30   ~ 1h quick charge
Operating voltage	100–240 V   50/60 Hz (plug-in-transformer)
Dimensions L/W/D   Weight	178 × 46 × 50 mm   ~ 290 g



**MAGIC BLADE – standard blade set**  
0.7–3 mm | 1854-7506



Chip-controlled motor for constant cutting-power

Optical battery level indicator

Cord / cordless (two way)



# NEO

WEITERE INFOS



## Professional starter clipper

Ideal for beginners!

The perfect clipper for professionals without compromises when it comes to quality.



Ergonomically balanced weight distribution

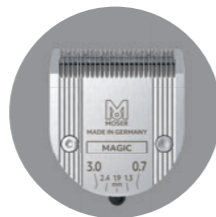
Slim shape for comfortable handling

Battery charge indicator via LED

Cord / cordless (two way)



NEO	
Article no.	1886-0051
EAN	Single: 4015110023166 Carton: 4015110031512   6 pcs.
Accessories	4 slide-on attachment combs 3, 6, 9, 12 mm, plug-in transformer, cleaning brush, oil
Drive	DC motor, ~ 5.000 rpm
Run time   charge time	Up to 1h30   ~ 2h
Operating voltage	100-240 V   50/60 Hz (plug-in-transformer)
Dimensions L/W/D   Weight	174 x 45 x 42 mm   ~ 275 g



**MAGIC BLADE – standard blade set**  
0.7–3 mm | 1854-7506



## Flexible & easy

"Cutting the hair with the MOSER NEO combined with the TEXTURIZING BLADE was for me the best way to achieve a perfect result. The NEOLINER trimmer was used to create the precise contours."

*Chris Mattick*

Lead Educator MOSER Artistic Team

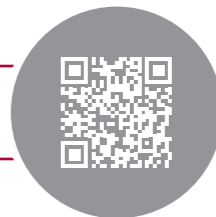
## Ideal tool to learn all kind of universal hair cutting techniques

The NEO clipper is the ideal tool to learn all kind of universal hair cutting techniques. The detachable standard MAGIC BLADE can also be exchanged to the TEXTURIZING BLADE for even more creativity in the salon. Masculine, casual & unique – the "modern man" look from the roots anniversary collection by MOSER. Accents & boldly visible textures lend greater individuality to the look.



**Step 1:** Part an elongated triangle on the top of the head from the crown to the forehead. **Step 2:** Shorten the sections running diagonally backwards using the MOSER NEO & over-comb technique to reduce the silhouette of the head. **Step 3:** Elevate & draw the side hair at the top of the head (not the triangle) sideways in box shape & shorten using the point cutting technique. (Step 4–7\*)

\*You can find the complete step-by-step guide for the "modern man look" & much more that will inspire you on our website.







# PRIMAT

**Most durable professional corded clipper**

WEITERE INFOS



Maximum efficiency!

Corded reliable clipper with an ideal performance even cutting thick & afro hair.



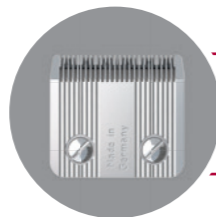
MULTICLICK® cutting length adjustment / 6 positions

Powerful & durable pivot motor for continuous operation

Extremely quiet & runs smoothly

3 m extra-long cable

PRIMAT	
<b>Lightgrey</b> Article no.: 1230-0051	EAN Single: 4015110000297 EAN Carton: 4015110020639   6 pcs.
<b>Titan</b> Article no.: 1230-0053	EAN Single: 4015110006589 EAN Carton: 4015110020646   6 pcs.
<b>Accessories</b>	2 slide-on attachment combs 4.5 & 9 mm, cleaning brush, oil
<b>Drive</b>	Pivot motor, ~ 3.000 rpm
<b>Operating voltage</b>	Max. 15 W   220–240 V   50/60 Hz ~ 3 m professional cord
<b>Dimensions L/W/D   Weight</b>	180 x 67 x 42 mm   ~ 620 g



**STAR BLADE – professional stainless steel blade set**  
0.7–3 mm | 1230-7710

# PRIMAT FADING EDITION

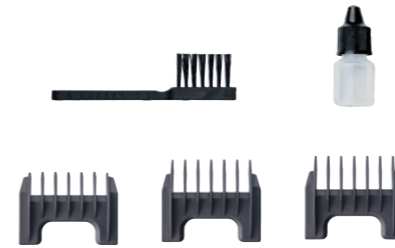
**Professional corded fading clipper**

WEITERE INFOS



Non-stop fading! Short and clean fades due to 0-overlap adjustment.

Continuous quiet and smooth running performance.



PRIMAT FADING	
<b>Article no.</b>	1230-0002
<b>EAN</b>	Single: 4015110028161 Carton: 4015110028178   6 pcs.
<b>Accessories</b>	3 slide-on attachment combs 1.5 & 3 & 4.5mm, cleaning brush, oil
<b>Drive</b>	Pivot motor, ~ 3.000 rpm
<b>Operating voltage</b>	Max. 15 W   220–240 V   50/60 Hz ~ 3 m professional cord
<b>Dimensions L/W/D   Weight</b>	180 x 67 x 42 mm   ~ 620 g

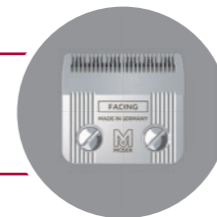


MULTICLICK® cutting length adjustment / 6 positions

Powerful & durable pivot motor for continuous operation

Extremely quiet & runs smoothly

3 m extra-long cable



**FADING BLADE – for precise on-scalp fades**  
0.5–2 mm | 1230-7255



# 1400

## Professional classic corded clipper

WEITERE INFOS



The professional classic since 1962! MOSER's most sold clipper is a reliable & robust tool with an excellence performance.



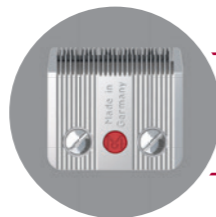
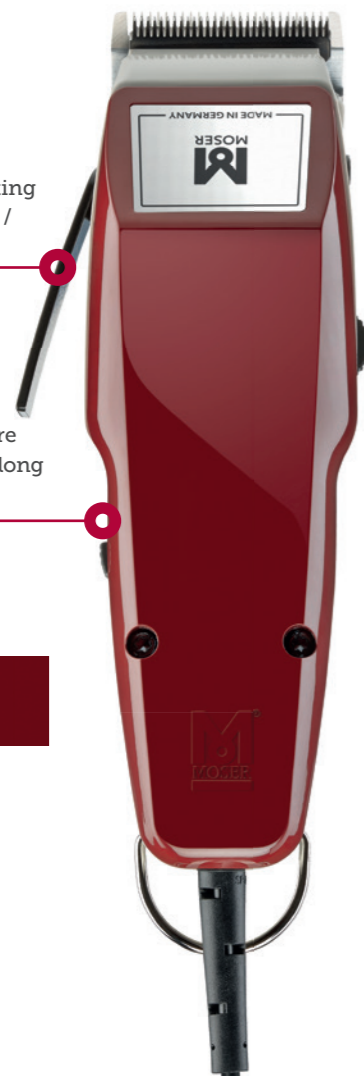
1400-0278

1400-0087

1400	
<b>Burgundy</b> Article no.: 1400-0050	EAN Single: 4015110000129 EAN Carton: 4015110020776   50 pcs. Accessories: 4.5 mm attachment comb, cleaning brush, oil
<b>Burgundy</b> Article no.: 1400-0278	EAN Single: 4015110000624 EAN Carton: 4015110030911   6 pcs. Accessories: 4 slide-on attachment combs 4.5, 6, 9, 14 mm, hair comb, scissor, cleaning brush, oil
<b>Black</b> Article no.: 1400-0087	EAN Single: 4015110011828 EAN Carton: 4015110020806   50 pcs. Accessories: variable attachment comb (4–18 mm), 4.5 mm attachment comb, cleaning brush, oil
<b>Drive</b>	Oscillating armature motor, ~ 6.000 rpm
<b>Operating voltage</b>	Max. 10 W   230 V   50/60 Hz ~ 2 m professional cord
<b>Dimensions L/W/D   Weight</b>	175 x 69 x 50 mm   ~ 520 g

MULTICLICK® cutting length adjustment / 6 positions

Powerful & robust oscillating armature motor for an extra-long service life



**STAR BLADE – professional stainless steel blade set**  
0.7–3 mm | 1401-7600

# 1400 FADING EDITION

## Professional corded fading clipper

WEITERE INFOS



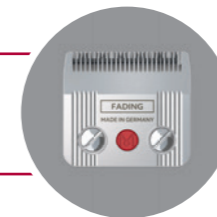
The classic reinvented! The classic and famous hairclipper Made in Germany, now with a special fading blade for short and clean fades..



1400 FADING	
<b>Article no.</b>	1400-0002
<b>EAN</b>	Single: 4015110028239 Carton: 4015110028246   50 pcs.
<b>Accessories</b>	1 slide-on attachment comb 1.5 mm, cleaning brush, oil
<b>Drive</b>	Oscillating armature motor, ~ 6.000 rpm
<b>Operating voltage</b>	Max. 10 W   230 V   50/60 Hz ~ 2 m professional cord
<b>Dimensions L/W/D   Weight</b>	175 x 69 x 50 mm   ~ 520 g

MULTICLICK® cutting length adjustment / 6 positions

Powerful & robust oscillating armature motor for an extra-long service life

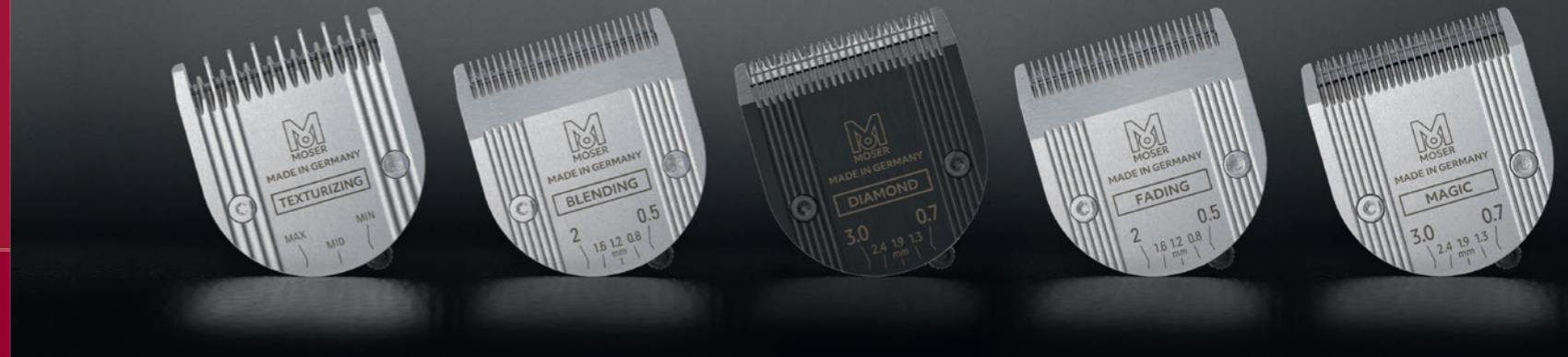


**FADING BLADE – for precise on-scalp fades**  
0.5–2 mm | 1406-7320

# Our masterpieces for all requirements

We offer the perfect cutting performance & tools for every part & step of a hair cut. The blade set is the core element of every clipper & trimmer & decisive when it comes to attaining cutting perfection!

More than 75 years of hairstyling know-how combined with Black Forest precision make each MOSER blade set the ideal tool for stylists.



## The main advantages of our blade sets are:



### Sharp'n'soft

Razor-sharp cutting edges ensure the achievement of an exact cut &, thanks to additional polishing, are super soft on the skin.



### Easy slide

The blade set glides particularly smoothly through hair, thanks to an optimum geometry.



### Long life

The precision cross hatch finish ensures minimum wear & a long service life.



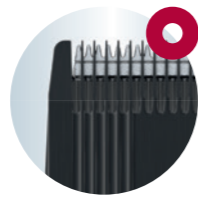
### Quick change

The blade set is not screwed rigidly into place. Easy blade set removal facilitates rapid changing & cleaning.



### Easy cleaning

A sophisticated function which enables simple cleaning.



### Special coating

Innovative carbon coating for a long lifetime, rinsable & disinfectable.

## Blade set expertise Made in Germany

MOSER offers a wide range of blade sets for all kind of hair cuts, cutting applications & techniques. Choose the right blade set for your individual requirements.

### STANDARD APPLICATIONS

#### MAGIC BLADE

High precision blade for standard cutting like mass-removal, clipper-over-comb technique & off the scalp transitions, 0.7–3 mm.

#### DIAMOND BLADE

High precision blade with carbon coating for standard cutting like mass removal, clipper-over-comb technique & off the scalp transitions: rinsable, disinfectable, durable, 0.7–3 mm.



#### TEXTURING

#### TEXTURIZING BLADE

For creative texturizing & slicing techniques. 3 levels of intensity.

#### FADING

#### FADING BLADE

For precise on-scalp fades 0.5–2 mm.

#### BLENDING

#### BLENDING BLADE

For smooth & natural transitions 0.5–2 mm.



Check out the video about the DIAMOND BLADE with it's innovative features.

## Attachment combs & blade set compatibility of MOSER clippers



Article no.:	1854-7506	1884-7041	1854-7023	1854-7042	1887-7050	1887-7020	1401-7600	1230-7710	1406-7320	1230-7255
<b>Quick-detach blades:</b>	✓	✓	✓	✓	✓	✓	-	-	-	-
<b>Cutting length:</b>	0.7-3 mm	0.7-3 mm	0.7-3 mm	3 levels	0.5-2 mm	0.5-2 mm	0.7-3 mm	0.7-3 mm	0.5-2 mm	0.5-2 mm
<b>Blade set width:</b>	46 mm	46 mm	46 mm	46 mm	46 mm	46 mm	46 mm	46 mm	46 mm	46 mm
KUNO	●	✓	●	●	✓	●	-	-	-	-
CHROM2STYLE BLENDING EDITION	●	●	●	●	✓	●	-	-	-	-
GENIO PRO FADING EDITION	●	●	●	●	●	✓	-	-	-	-
CHROM2STYLE	●	✓	●	⊙	⊙	⊙	-	-	-	-
GENIO PRO	✓	●	●	⊙	⊙	⊙	-	-	-	-
CHROMSTYLE PRO	✓	●	●	⊙	⊙	⊙	-	-	-	-
NEO	✓	●	●	⊙	⊙	⊙	-	-	-	-
PRIMAT	-	-	-	-	-	-	-	✓	-	⊙
PRIMAT FADING EDITION	-	-	-	-	-	-	-	⊙	-	✓
1400	-	-	-	-	-	-	✓	-	⊙	-
1400 FADING EDITION	-	-	-	-	-	-	⊙	-	✓	-

included: ✓ compatible: ⊙ recommended for best results: ●

## TEXTURIZING BLADE – for ultimate versatile usage

Three positions can be selected using the adjusting lever integrated in the blade set. The intensity of the cutting effect can be individually adapted during this through intermediate positions.

- for defining & structuring short hair
- wispy looks in long hair
- for blending supporting hair into extremely thick hair
- for defining voluminous layers while maintaining the same hair length
- for slicing & peeling long hairstyles for a fresh, healthy look – prevents split ends
- for cutting hair extensions



## Clipper attachment combs & accessories



MAGNETIC PREMIUM ATTACHMENT COMBS			STANDARD BATTERY PACK		
Article no.:	1801-7000	1801-7010	1801-7020	1801-7100	1874-7005
Content:	6 magnetic premium attachment combs in storage box 1.5, 3, 4.5, 6, 9, 12 mm	3 magnetic premium attachment combs in cardboard box 1.5, 3, 4.5 mm	3 magnetic premium attachment combs in cardboard box 6, 9, 12 mm	empty storage box	~ 1h45 run time ~ 1h20 charge time

### Compatible with:

- all cord / cordless MOSER clippers

- magnetic premium attachment combs
- GENIO PRO
- GENIO PRO FADING EDITION



METAL SLIDE-ON ATTACHMENT COMBS	NEW SLIDE-ON ATTACHMENT COMBS	VARIO ATTACHMENT COMB	PLASTIC ATTACHMENT COMBS	SLIDE-ON ATTACHMENT COMBS
---------------------------------	-------------------------------	-----------------------	--------------------------	---------------------------

Article no.:	1233-7050	1233-7180	1802-7000 – 1802-7060	1230-5400	1230-7490 – 1230-7640	1881-7000 – 1881-7530
Content:	8 metal attachment combs in storage box: 3, 6, 10, 13, 16, 19, 22 & 25 mm	2 metal attachment combs: 1.5 & 4.5 mm	1802-7000 Set in blister 1802-7010 – 1802-7060 see pictures below	4-18 mm	1230-7490 / 4.5 mm 1230-7500 / 6 mm 1230-7510 / 9 mm 1230-7630 / 14 mm 1230-7640 / 19 mm	1 pcs. Size 50 pcs. 1881-7500 1.5 mm 1881-7190 3 mm 1881-7530 4.5 mm 1881-7200 6 mm 1881-7210 9 mm 1881-7220 12 mm 1881-7230 18 mm 1881-7240 25 mm 1881-7010 1881-7020 1881-7030 1881-7040 1881-7050

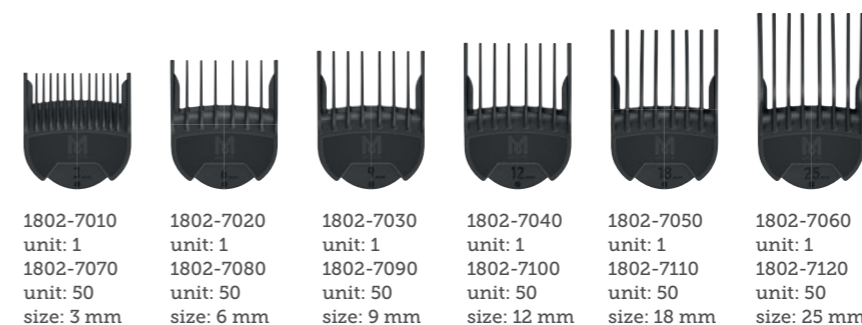
### Compatible with:

- all MOSER clippers

- all MOSER clippers
- 1400
- 1400 FADING EDITION
- PRIMAT
- PRIMAT FADING EDITION

- 1400
- 1400 FADING EDITION
- PRIMAT
- PRIMAT FADING EDITION

- all MOSER clippers



Innovative MAGCLICK® magnetic fit for easy use & handling, secure & strong fit on the blade. Strong mineral/glass fiber plastic material, rounded comb edges: better cutting results, smooth gliding through hair, comfortable for skin. Including small sizes for fading.





## LI+ PRO 2 MINI

WEITERE INFOS



### Professional premium trimmer

The new generation!

Light & silent with 3 adjustable speed levels. On top, it's easy to clean.

Chip-controlled motor for constant cutting-power

Push button with integrated charge control

3 speed levels for individual requirements

Easy cleaning & extended comfort

Cord / cordless (two way)



LI+ PRO 2 MINI	
Article no.	1588-0051
EAN	Single: 4015110018896 Carton: 4015110031147   6 pcs.
Accessories	1 variable attachment comb 3-6 mm, charging stand, energy-efficient plug-in transformer, cleaning brush, clipper oil
Special warranty	2 years on battery
Drive	DC motor with sound proofing, ~ 4.500/5.600/6.000 rpm
Run time   charge time	Up to 2h   ~ 1h20 quick charge
Operating voltage	100-240 V   50/60 Hz (plug-in-transformer)
Dimensions L/W/D   Weight	132 x 32 x 34 mm   ~ 120 g



**DIAMOND BLADE** – rinsable, disinfectable & 40 times more resistant  
0.4 mm | 1584-7230

## CHROMINI PRO 2

WEITERE INFOS



### Professional ultra-close trimmer

Close to the skin!

Faster, shorter & cleaner detail work for sharp outlines, edge linings & shape ups.



CHROMINI PRO 2	
Article no.	1591-0064
EAN	Single: 4015110033264 Carton: 4015110033271   6 pcs.
Accessories	1 variable attachment comb 3 - 6 mm, charging stand, plug-in transformer, cleaning brush, oil
Information system	Optical: via LED   acoustic: via signal-tones
Drive	DC motor with sound proofing, ~ 7.000 rpm
Run time   charge time	Up to 1h25   ~ 2h quick charge
Operating voltage	100-240 V   50/60 Hz (plug-in-transformer)
Dimensions L/W/D   Weight	142 x 32 x 32 mm   ~ 130 g

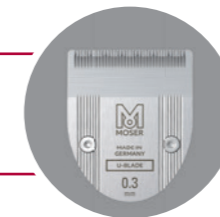


High performance motor - faster cutting & extra precise results

Ergonomic, super lightweight & quiet

Battery charge indicator via LED

Cordless use



**U-BLADE** – for ultra-precise contours  
0.3 mm | 1584-7280



## T-CUT

### Professional t-wide trimmer

Get all kind of hair cuts in shape!

A cordless wide trimmer that allows fast & precise work, straighter edging & wide lining.

WEITERE INFOS



High performance motor – faster cutting & extra precise results

Ergonomic, super lightweight & quiet

Battery charge indicator via LED

Cordless use



T-CUT	
Article no.	1591-0070
EAN	Single: 4015110015109 Carton: 4015110020998   6 pcs.
Accessories	Charging stand, plug-in transformer, cleaning brush, oil
Drive	DC motor with sound proofing, ~ 6.400 rpm
Run time   charge time	Up to 1h   ~ 2h quick charge
Operating voltage	100-240 V, 50/60 Hz (plug-in-transformer)
Dimensions L/W/D   Weight	142 x 32 x 32 mm   ~ 135 g



**T-BLADE** – ideal for close trimming  
0.4 mm | 1584-7161

## NEOLINER

### Professional starter trimmer

The ideal entry level trimmer!

The perfect trimmer for professionals without compromises when it comes to clean contours & details.

WEITERE INFOS



NEOLINER	
Article no.	1586-0051
EAN	Single: 4015110023081 Carton: 4015110031116   6 pcs.
Accessories	1 variable attachment comb 3 - 6 mm, plug-in transformer, cleaning brush, oil
Information system	Optical: via LED   acoustic: via signal-tones
Drive	DC motor with sound proofing, ~ 5.350 rpm
Run time   charge time	Up to 1h40   ~ 2h quick charge
Operating voltage	100-240 V, 50/60 Hz (plug-in-transformer)
Dimensions L/W/D   Weight	148 x 33 x 33 mm   ~ 135 g

**MAGIC BLADE** – professional stainless steel blade set  
0.4 mm | 1590-7001



Super lightweight & quiet

Ergonomic weight distribution & slim shape

Battery charge indicator via LED

Cord / cordless (two way)





# 1400 MINI

WEITERE INFOS

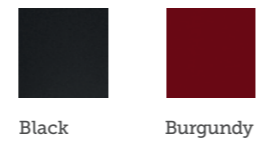


## Professional corded trimmer

Reliable – resistant – long lasting! The most durable professional corded trimmer with continuous maximum efficiency & 0-overlap adjustment.



1400 MINI	
<b>Black</b> Article no.: 1411-0087	EAN Single: 4015110012122 EAN Carton: 4015110020882   20 pcs.
<b>Burgundy</b> Article no.: 1411-0050	EAN Single: 4015110011248 EAN Carton: 4015110020844   20 pcs.
<b>Accessories</b>	1 variable attachment comb 3 - 6 mm, cleaning brush, oil
<b>Drive</b>	Pivot motor, ~ 3.000 rpm
<b>Operating voltage</b>	220-240 V   50/60 Hz, ~ 2 m professional cord
<b>Dimensions L/W/D   Weight</b>	136 x 41 x 35 mm   ~ 190 g



Super lightweight

Smooth running & extra quiet

Powerful & durable motor for continuous operation



**STAR BLADE – professional chrome-plated stainless steel blade set**  
0.3 mm | 1411-7000



# PRIMAT MINI

WEITERE INFOS



## Professional corded trimmer

Reliable – resistant – long lasting! The most durable professional corded trimmer with continuous maximum efficiency & 0-overlap adjustment.

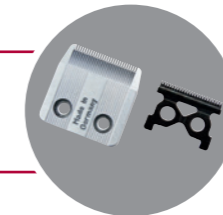


PRIMAT MINI	
<b>Article no.</b>	1411-0052
<b>EAN</b>	Single: 4015110012672 Carton: 4015110020868   20 pcs.
<b>Accessories</b>	1 variable attachment comb 3 - 6 mm, cleaning brush, oil
<b>Drive</b>	Pivot motor, ~ 3.000 rpm
<b>Operating voltage</b>	220-240 V   50/60 Hz, ~ 2 m professional cord
<b>Dimensions L/W/D   Weight</b>	136 x 41 x 35 mm   ~ 190 g

Super lightweight

Smooth running & extra quiet

Powerful & durable motor for continuous operation



**STAR BLADE – professional chrome-plated stainless steel blade set**  
0.3 mm | 1411-7000

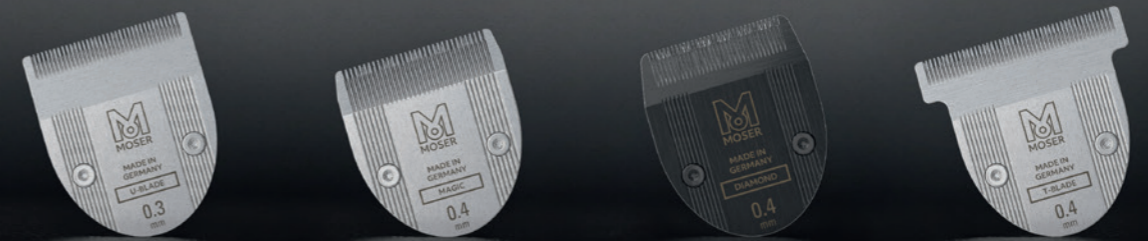




# Our masterpieces for all requirements

We offer the perfect cutting performance & tools for every part & step of a hair cut. The blade set is the core element of every clipper & trimmer & decisive when it comes to attaining cutting perfection!

75 years of hairstyling know-how combined with Black Forest precision make each MOSER blade set the ideal tool for stylists.



## Blade set expertise Made in Germany

MOSER offers a wide range of blade sets for all kind of hair cuts, cutting applications & techniques. Different blade sets available for individual requirements.

### CONTOURS

#### DETACHABLE TRIMMER BLADES:

The most delicate contours & precise edges. For close trimming, line-ups & all detail work: 0.3–0.4 mm.



Ultra short & still comfortable to skin



With or without coating



T-shape for wide lining



#### Sharp'n'soft

Razor-sharp cutting edges ensure the achievement of an exact cut and, thanks to additional polishing, are super soft on the skin.



#### Quick change

The blade set is not screwed rigidly into place. Easy blade set removal facilitates rapid changing & cleaning.

## Attachment combs & blade set compatibility of MOSER trimmers



Article no.:	1584-7280	1590-7001	1584-7021	1584-7230	1584-7161	1411-7000	1590-7050
Quick-detach blades:	✓	✓	✓	✓	✓	adjustable to 0-overlap	–
Cutting length:	0.3 mm	0.4 mm	0.4 mm	0.4 mm	0.4 mm	0.3 mm	3–6 mm
Blade set width:	32 mm	32 mm	32 mm	32 mm	40 mm	32 mm	–
LI* PRO 2 MINI	●	–	●	✓	●	–	⊙
CHROMINI PRO 2	✓	⊙	●	●	●	–	⊙
T-CUT	●	–	●	●	✓	–	⊙
NEOLINER	⊙	✓	●	●	⊙	–	⊙
1400 MINI	–	–	–	–	–	✓	⊙
PRIMAT MINI	–	–	–	–	–	✓	⊙

included: ✓ compatible: ⊙ recommended for best results: ●



#### Easy cleaning

A sophisticated function which enables simple cleaning.



#### Special coating

Innovative carbon coating for a long lifetime, rinsable & disinfectable.

\*For the best possible result we recommend the usage of the trimmers with the highest rpm.

## VENTUS PRO

**Premium 2.200 W compact professional hair dryer**

VENTUS PRO	
Article no.	4352-0050
EAN	Single: 4015110034506 Carton: 4015110034513   6 pcs.
Accessories	2 professional click & turn nozzles removable high-grade steel filter
Air flow   air speed	~ 103 m <sup>3</sup> /h   ~ 165 km/h
Safety	Safety thermostat / overheat protection
Type of operation	3 heating stages, cold-shot, 2 speeds
Technology	Tourmaline generates nurturing ions & gentle infrared warmth for shiny, healthy hair – with antistatic effect
Drive	2.200 Watt, durable AC-collector motor
Operating voltage	2.200 W   220–240 V~   50/60 Hz
Cable	3 m professional cable with hanging loop
Dimensions L/W/D   Weight	215 × 80 × 245 mm   ~ 515 g



long hair

standard

click &amp; turn

## EDITION PRO 2

**Classic 2.000 W professional hair dryer**

EDITION PRO 2	
Article no.	4332-0050
EAN	Single: 4015110034483 Carton: 4015110034490   6 pcs.
Accessories	2 professional click & turn nozzles – both with OAS (Over-Air-System)   removable high-grade steel filter
Air flow   air speed	~ 92m <sup>3</sup> /h   ~ 150 km/h
Safety	Safety thermostat / overheat protection
Type of operation	3 heating stages, cold-shot, 2 speeds
Technology	Nurturing ions & gentle infrared warmth for shiny, healthy hair – with antistatic effect
Drive	2.000 Watt, durable AC-collector motor
Operating voltage	2.000 W   220–240 V~   50/60 Hz
Cable	3 m professional cable with hanging loop
Dimensions L/W/D   Weight	235 × 90 × 245 mm   ~ 485 g



long hair

standard

click &amp; turn

## PROTECT

**Strong professional hair dryer**

PROTECT	
Article no.	4360-0050
EAN	Single: 4015110009405 Carton: 4015110021308   12 pcs.
Accessories	1 professional standard nozzle, 1 professional long hair nozzle, removable filter
Air flow	~ 84 m <sup>3</sup> /h
Safety	Safety thermostat / overheat protection
Type of operation	3 heating stages, cold-shot, 2 speeds
Drive	Up to 1.500 Watt, durable AC-collector motor
Operating voltage	1.500 W   220–240 V~   50/60 Hz
Cable	2.8 m professional cable with hanging loop
Dimensions L/W/D   Weight	240 × 90 × 220 mm   ~ 570 g



standard

long hair

## ACCESSORIES

**Additionally available**



**STYLING DIFFUSER**  
4352-7020  
compatible with:  
VENTUS PRO  
EDITION PRO 2



**STYLING DIFFUSER**  
4360-7000  
compatible with:  
PROTECT



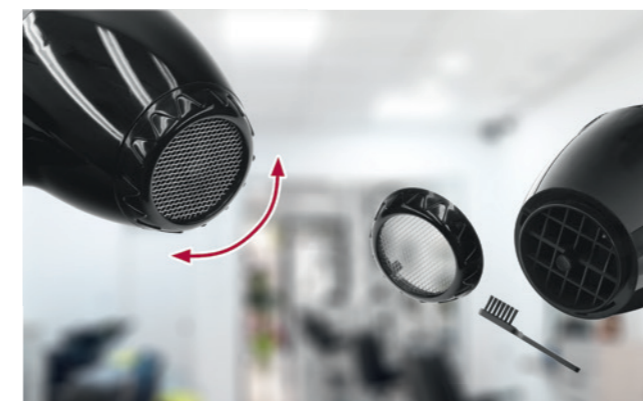
**UNIVERSAL DIFFUSER**  
4300-7910



**COMB NOZZLE**  
4340-7000  
compatible with:  
PROTECT



**HAIR DRYER HOLDER**  
0092-6560



Please make sure to clean the rear filter of your MOSER hair dryer regularly. Take off the rear filter & use a small brush to remove residues.

## CERALINE

**Professional premium hair straightener**

CERALINE	
Article no.	4466-0051
EAN	Single: 4015110022763 Carton: 4015110031802   12 pcs.
Heating plates	Width: 25 mm, length: 100 mm rounded, extra-long floating styling plates, ceramic-tourmaline-coated
Extra short heat-up time	25 sec.
Operating temperature	150–230 °C in 5 steps by touch display
Sleep mode	Safety cut-off after 60 min.
Operating voltage	43–47 W   110–240 V   50/60 Hz
Cable	2.7 m professional swivel cord with hanging loop
Weight	~ 210 g



Touch display

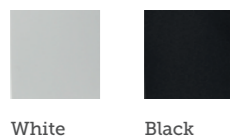
## CERASTYLE PRO

**Professional ceramic hair straightener**

CERASTYLE PRO	
Black Article no.: 4417-0050	EAN Single: 4015110011682 EAN Carton: 4015110017660   12 pcs.
White Article no.: 4417-0051	EAN Single: 4015110011675 EAN Carton: 4015110018971   12 pcs.
Heating plates	Width: 24 mm, length: 90 mm rounded floating styling plates, ceramic-coated
Heat-up time	30 sec.
Operating temperature	150–230 °C
Sleep mode	Safety cut-off after 60 min.
Operating voltage	40 W   220–240 V   50/60 Hz
Cable	2.8 m professional swivel cord with hanging loop
Weight	~ 210 g



Silky, shiny hair



White

Black

## CERASTYLE MINI

**Professional mini hair straightener**

CERASTYLE MINI	
Article no.	4480-0050
EAN	Single: 4015110008460 Carton: 4015110018964   24 pcs.
Accessories	Heat resistant travel bag
Heating plates	Width: 13 mm, length: 60 mm ceramic-tourmaline-coated
Heat-up time	60 sec.
Operating temperature	180 °C
Operating voltage	20 W   110–240 V   50/60 Hz
Cable	2.5 m professional swivel cord
Weight	~ 60 g



## AIRSTYLER PRO

**Professional premium airstyler-set**

AIRSTYLER PRO	
Article no.	4550-0050
EAN	EAN Single: 4015110035800 EAN Carton: 4015110035817   6 pcs.
Accessories	3 thermal circular brushes Ø 25, 30, 38 mm 30mm with retractable bristles
Type of operation	2 speed & heat levels, cooling level
Safety	Safety thermostat / overheat protection
Operating voltage	1.100 W   120–240 V   50/60 Hz
Cable	2.8 m professional cable with hanging loop
Weight	~ 240–270 g without cable



Gentle drying & forming  
3 interchangeable attachments

Styling products like hair sprays, oils or creams can remain on the surface of your straightener plates or curling tong. Unplug your tool & wait until it's cooled down. Use a damp cotton wipe to clean the cooled down surfaces from time to time. Allow to dry for a couple of hours before plugging in again.

i

## TITANCURL

**Professional curling tong with titanium coating**

TITANCURL	
Ø 19 mm Article no.: 4443-0050	EAN Single: 4015110017943 EAN Carton: 4015110021384   12 pcs.
Ø 25 mm Article no.: 4444-0050	EAN Single: 4015110017950 EAN Carton: 4015110021391   12 pcs.
Ø 32 mm Article no.: 4445-0050	EAN Single: 4015110017967 EAN Carton: 4015110021407   12 pcs.
Heat-up time	60 sec.
Operating temperature	80–210 °C in 6 steps
Sleep mode	Safety cut-off after 60 min.
Operating voltage	40 W   220–240 V   50/60 Hz
Cable	2.7 m professional swivel cord
Weight (Ø 19, 25, 32 mm)	~ 225 g   ~ 315 g   ~ 340 g



**Easy temperature control, through LCD-display**

## CURLPRO 2

**Conical curling tong with titanium coating**

CURLPRO 2	
Article no.	4437-0050
EAN	EAN Single: 4015110015185 EAN Carton: 4015110018995   12 pcs.
Barrel tapers	Ø 25 mm down to Ø 13 mm
Heat-up time	30 sec.
Operating temperature	80–210 °C
Sleep mode	Safety cut-off after 60 min.
Operating voltage	45–50 W   100–240 V   50/60 Hz
Cable	2.5 m professional swivel cord
Weight	~ 150 g without cable



**Including 1 heat protection styling glove**

**i**

Styling products like hair sprays, oils or creams can remain on the surface of your straightener plates or curling tong. Unplug your tool & wait until it's cooled down. Use a damp cotton wipe to clean the cooled down surfaces from time to time. Allow to dry for a couple of hours before plugging in again.

## MOBILE SHAVER

**Cordless shaver**

MOBILE SHAVER	
Article no.	3615-0051
EAN	Single: 4015110007760 Carton: 4015110018384   48 pcs.
Accessories	Extra cutter & shaving foil, including space saving travel pouch
Information system	LED-charging indicator
Run time   charge time	Up to 0h45   ~ 8h
Cutting length	0.2 mm removes any stubble
Operating voltage	3 W   220–230 V   50/60 Hz
Dimensions L/W/D   Weight	46 x 100 x 20 mm   ~ 90 g



## SENSO

**Nose & ear trimmer**

SENSO	
Article no.	4900-0050
EAN	Single: 4015110014539 Carton: 4015110016038   6 pcs.
Accessories	Storage box & protective cap
Drive	Battery operated (1x AAA)
Cutting system	Rotating stainless steel cutting system
Dimensions L/W/D   Weight	15 x 134 x 15 mm   ~ 35 g with battery





# Professional Accessories



**WATER SPRAY BOTTLE**  
0092-6400



**WATER SPRAY BOTTLE**  
FLAIROSOL®  
0092-6240



**CLIPPER HOLDER**  
0092-6035



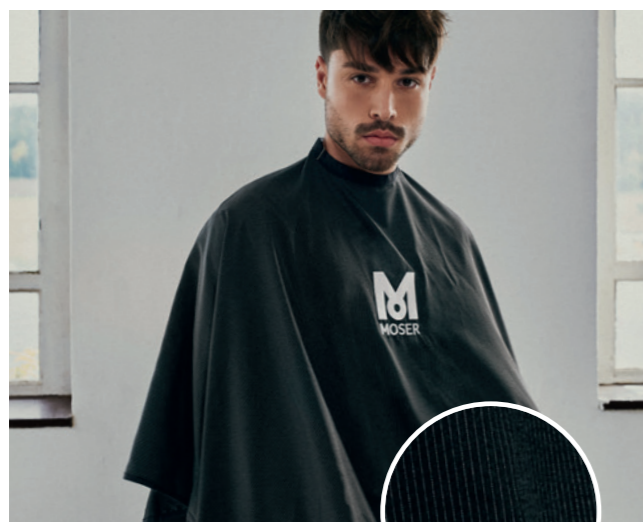
**CLIPPER COMB**  
0092-6310



**MINI FADE BRUSH**  
0092-6330



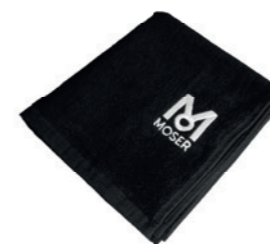
**NECK BRUSH WOOD**  
0092-6381



**PINSTRIPED CAPE**  
135 x 150 cm | 0092-0146



**HAIR DRESSING CAPE**  
135 x 150 cm | 0092-6231



**TOWEL**  
HAIRDRESSER QUALITY  
100 x 48 cm | 0092-6430

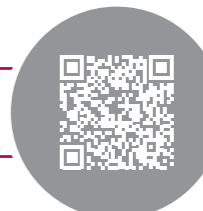


**HAIR CLIP**  
4 pcs.  
0092-0131



**LARGE TOOL BAG**  
0092-6185

You can find further accessories & much more that will inspire you on our website.



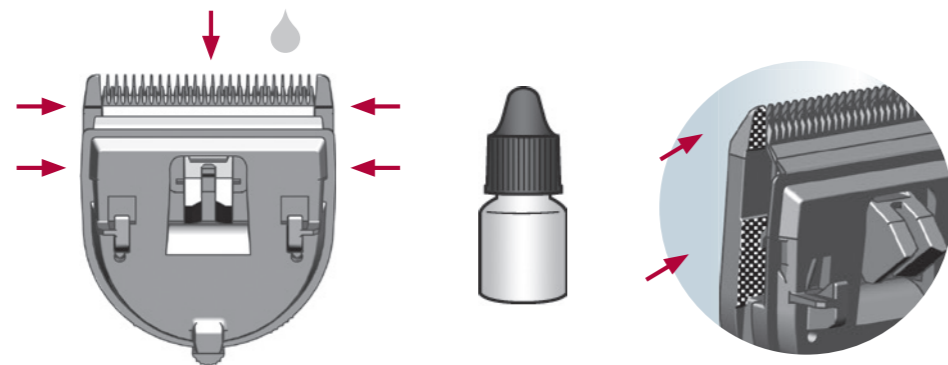
# Cleaning & maintenance of clippers & trimmers

Oiling & maintenance reduces friction, heat generation & wear of the blade set, protects from external influences & extends the service life of the appliance. Neglecting maintenance causes drive & transmission wear & also reduces battery operating time & cutting performance!

Clean & oil blade set after every haircut if possible, but at least 1x daily!



**Step 1:** Remove the blade set. **Step 2:** Clean the blade with a brush. To remove hairs between the blade & the comb, press the "Easy Cleaning" button. **Step 3:** Remove any accumulated hair from the housing & the inside of the housing (eccentric) of the appliance. **Step 4:** Put the blade set back on the clipper. **Step 5:** Disinfect. **Step 6:** Lubricate in 5 points. **Step 7:** Turn on the clipper to distribute the oil evenly.



## BLADE ICE

Highly effective 4in1 Spray that provides instant cooling, lubrication & cleaning for your clipper blades & prevents corrosion.

Contents: 400 ml  
2999-7900



## CLEANING SPRAY

Highly effective cleaning spray. Keeps all blade sets clean. Prevents corrosion for a long blade set service life.

Content: 250 ml  
4005-7052



## SPECIAL BLADE OIL

For professional care of blade sets.

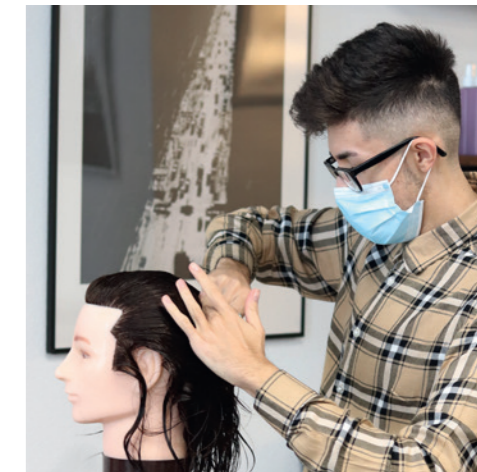
Contents: 200 ml  
1854-7935



Use BLADE ICE for cleaning & cooling the blade set – if possible after every haircut!



**Inspiration  
Motivation  
Education**



# Our masters, your training: the MOSER Academy



Did you know? We're not only providing professional high quality hair dressing tools but we also offer interesting & inspiring seminars.

The MOSER Academy will support you & your talent with a special offer: Courses with inspiring educators, the best appliances & the latest styles. Choose between intensive training or interesting workshops. Selected MOSER educators will teach you special techniques & tricks that take your skills to the next level.



Visit our website for more information:

*Your expert in  
professional hair clippers  
since 1946*

**WAHL GmbH**  
Villinger Straße 4  
78112 St. Georgen  
Germany

**MADE IN  
GERMANY**  
since 1946

A circular logo with a black top arc, a red right arc, and a yellow bottom arc, surrounding the text 'MADE IN GERMANY since 1946'.

We assume no liability for any printing errors or mistakes. Subject to change without notice. All rights reserved.  
Product images and the scope of delivery shown may differ from the products due to constant product improvements.

[moserpro.com](http://moserpro.com)